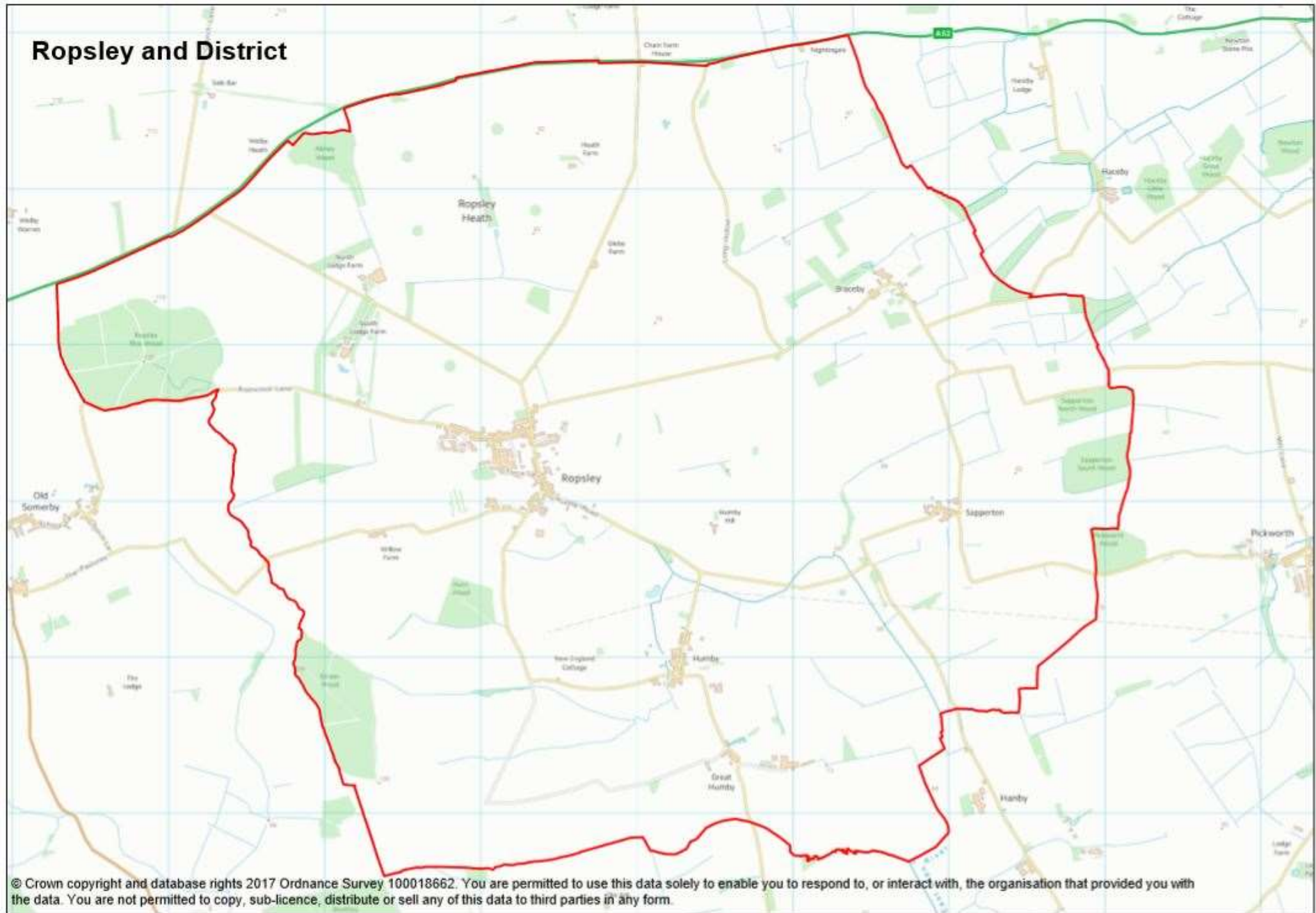


# Ropsley District Neighbourhood Plan

**Draft Plan Exhibition  
February/March 2020**



# Ropsley and District



© Crown copyright and database rights 2017 Ordnance Survey 100018662. You are permitted to use this data solely to enable you to respond to, or interact with, the organisation that provided you with the data. You are not permitted to copy, sub-licence, distribute or sell any of this data to third parties in any form.

# The NP process, what's involved?



DESIGNATING  
NEIGHBOURHOOD  
AREA AND SET UP A  
NEIGHBOURHOOD  
STEERING GROUP



PREPARING A  
DRAFT  
NEIGHBOURHOOD  
PLAN



PRE-SUBMISSION  
PUBLICITY &  
CONSULTATION



SUBMISSION OF A  
NEIGHBOURHOOD PLAN OR  
ORDER PROPOSAL TO THE  
LOCAL PLANNING AUTHORITY



INDEPENDENT  
EXAMINATION



REFERENDUM



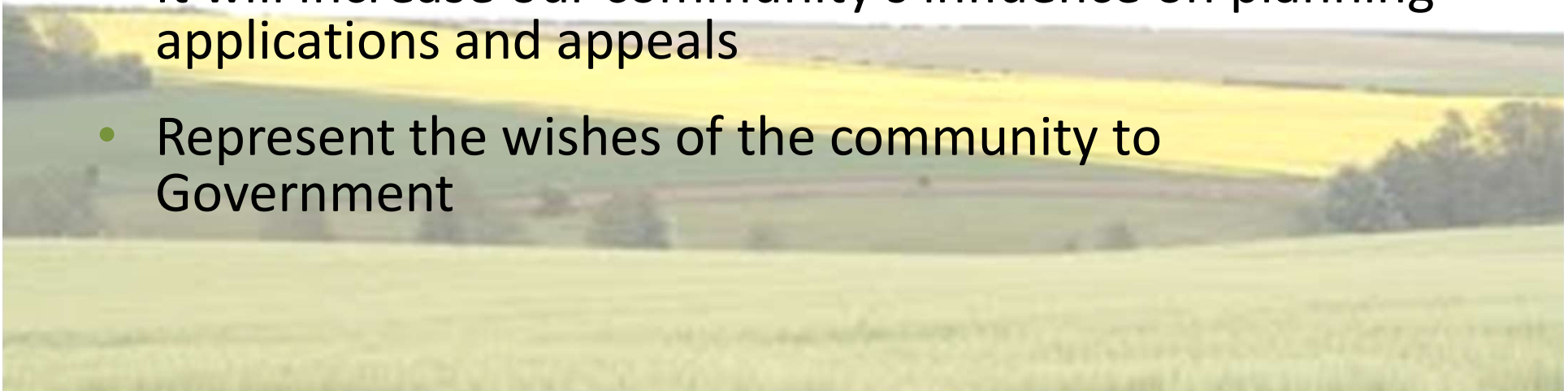
MAKING THE  
NEIGHBOURHOOD  
PLAN OR ORDER  
(BRINGING IT INTO  
FORCE)



# What can we influence?

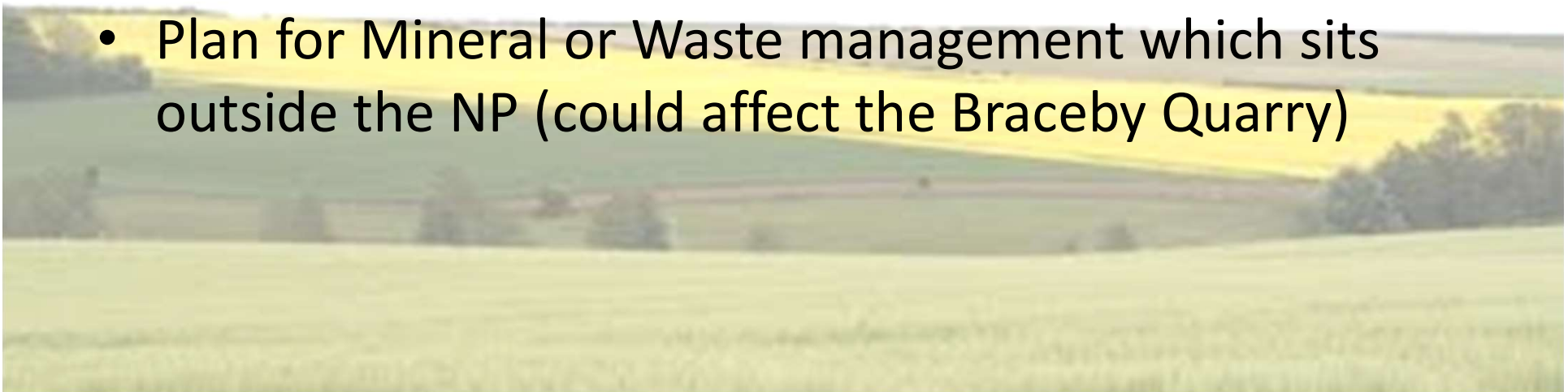
By having a Neighbourhood Plan...

- SKDC has a statutory obligation to consult and take note of our community's wishes
- It will shape how development will occur locally giving our community a bigger say over – volume, type, location, size, pace and design of future development
- It will increase our community's influence on planning applications and appeals
- Represent the wishes of the community to Government

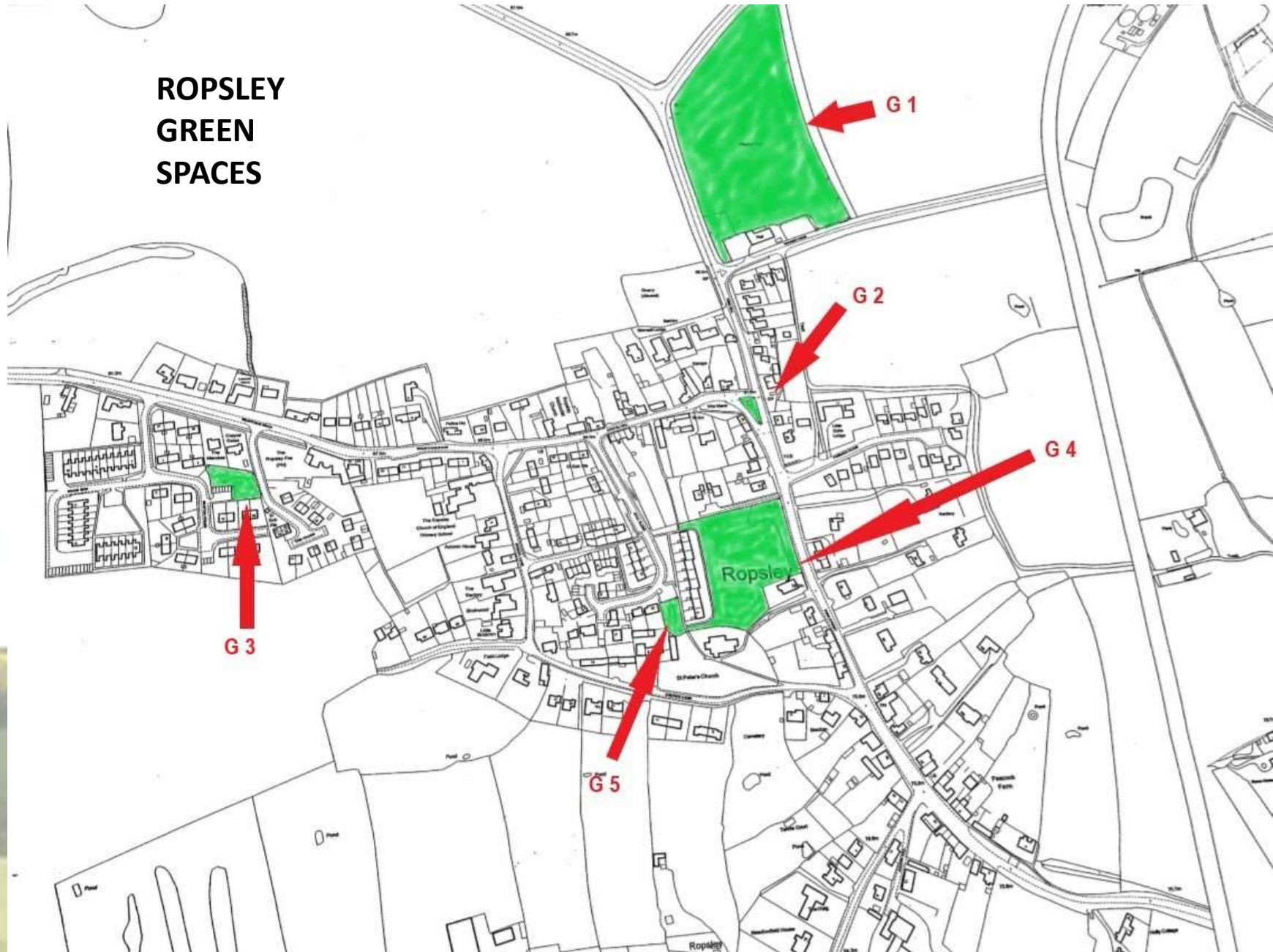


# What we can't do

- Ignore National Policy or the Local Plan – we are required to ensure our plan fits with these
- Make less development allocations than provided for in the Local Plan (but we can influence where these go and what they look like)
- Plan for Mineral or Waste management which sits outside the NP (could affect the Braceby Quarry)



**ROPSLEY  
GREEN  
SPACES**







PERCIVAL H.E. CHANTRY  
ARTHUR DEAN  
JOHN DOUGHTY  
HARRY DUNMORE  
GEORGE EDWARD FREESTONE  
GEORGE WILLIAM HARE  
WALTER HODSON  
JAMES KENT  
FRANCIS T. WATMOUGH  
LEST WE FORGET

THOMAS HARRISON  
ROBERT WINTERFIELD ABBOTT  
JOHN THOMAS HARRIS  
ALBERT ROSE  
JOHN THOMAS HARRIS  
ROBERT WILLIAM GOSCHMELL  
ERNEST HENRY CHAPPELL  
JOHN WILLIAM PHARES  
BY ORDER HARRISON W. LANE

1910 - 1955  
GIRARD CHRISTOPHER BREWSTER  
KENNETH GEORGE CORTON  
JOSEPH LESLIE ORIN  
WILLIAM PHILIP GALE  
WILFRED HARRLOW  
KENNETH SMITH (S4)

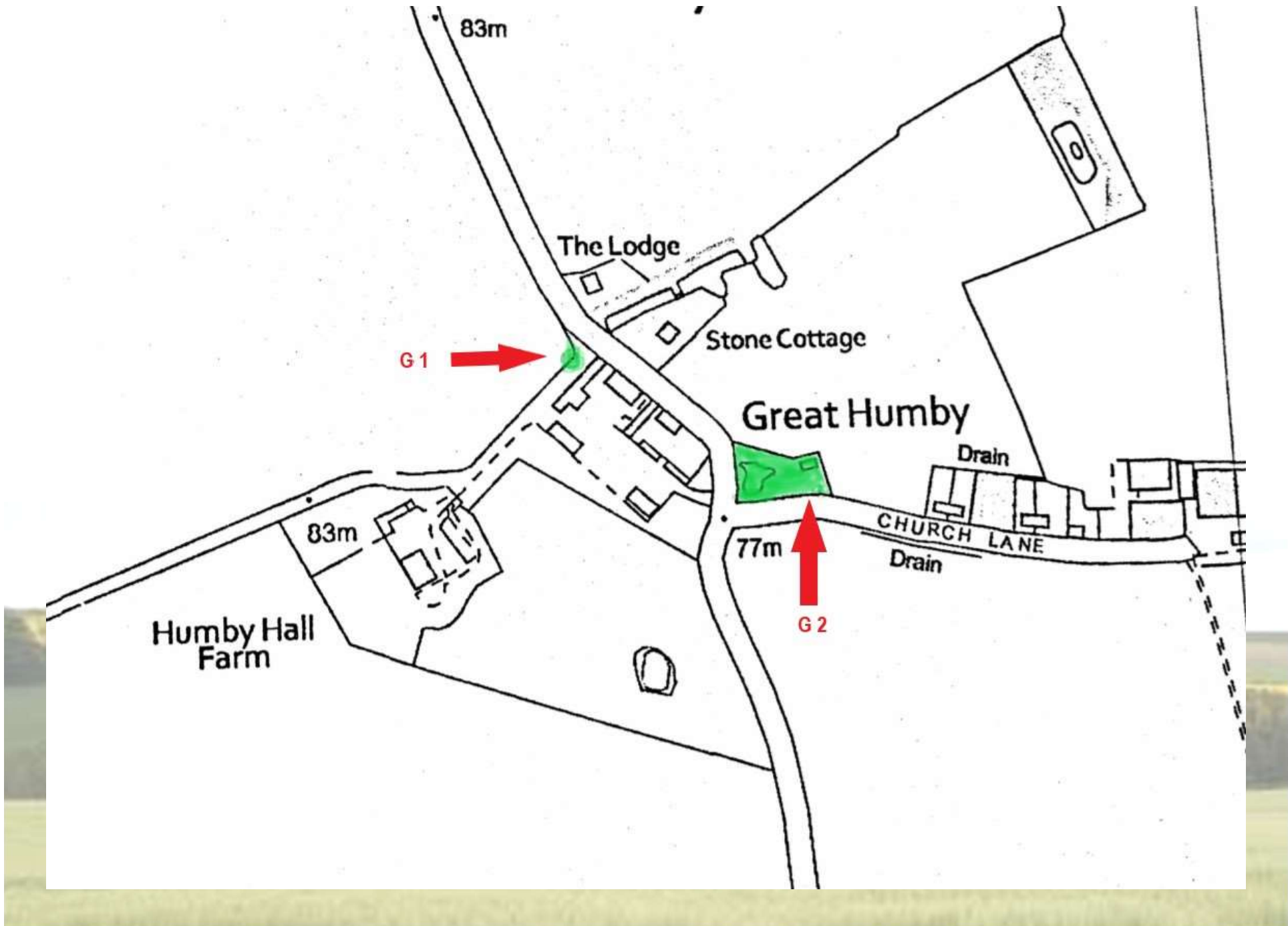
1914 - 1918  
GEORGE GANNAGE  
1920 - 1945  
NORMAN ABBOTT  
LANCELOT ROWBOOTHAM  
CYRIL WRIGHT





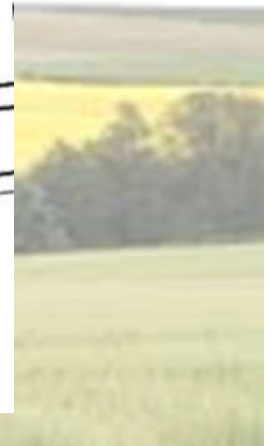
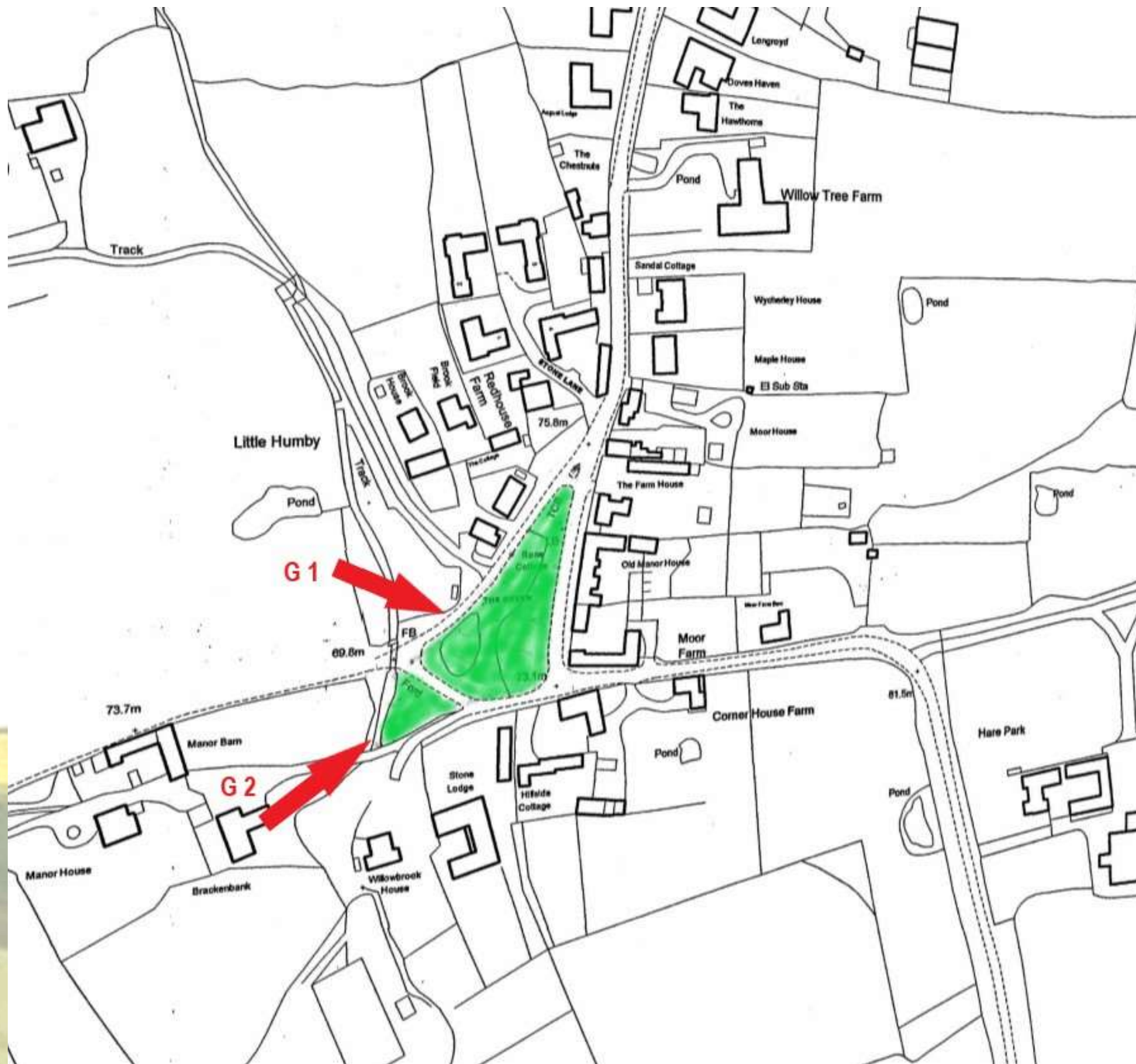








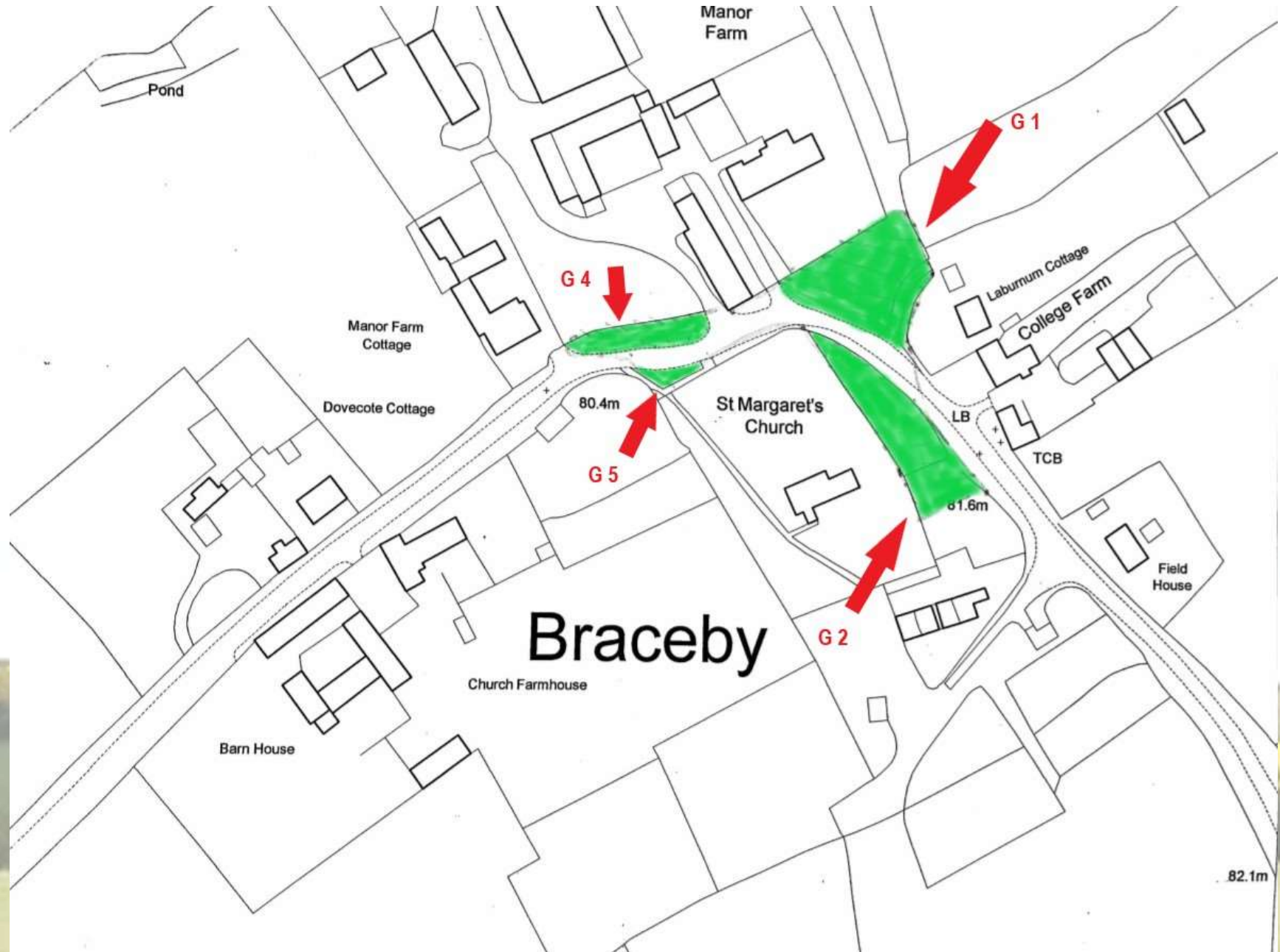










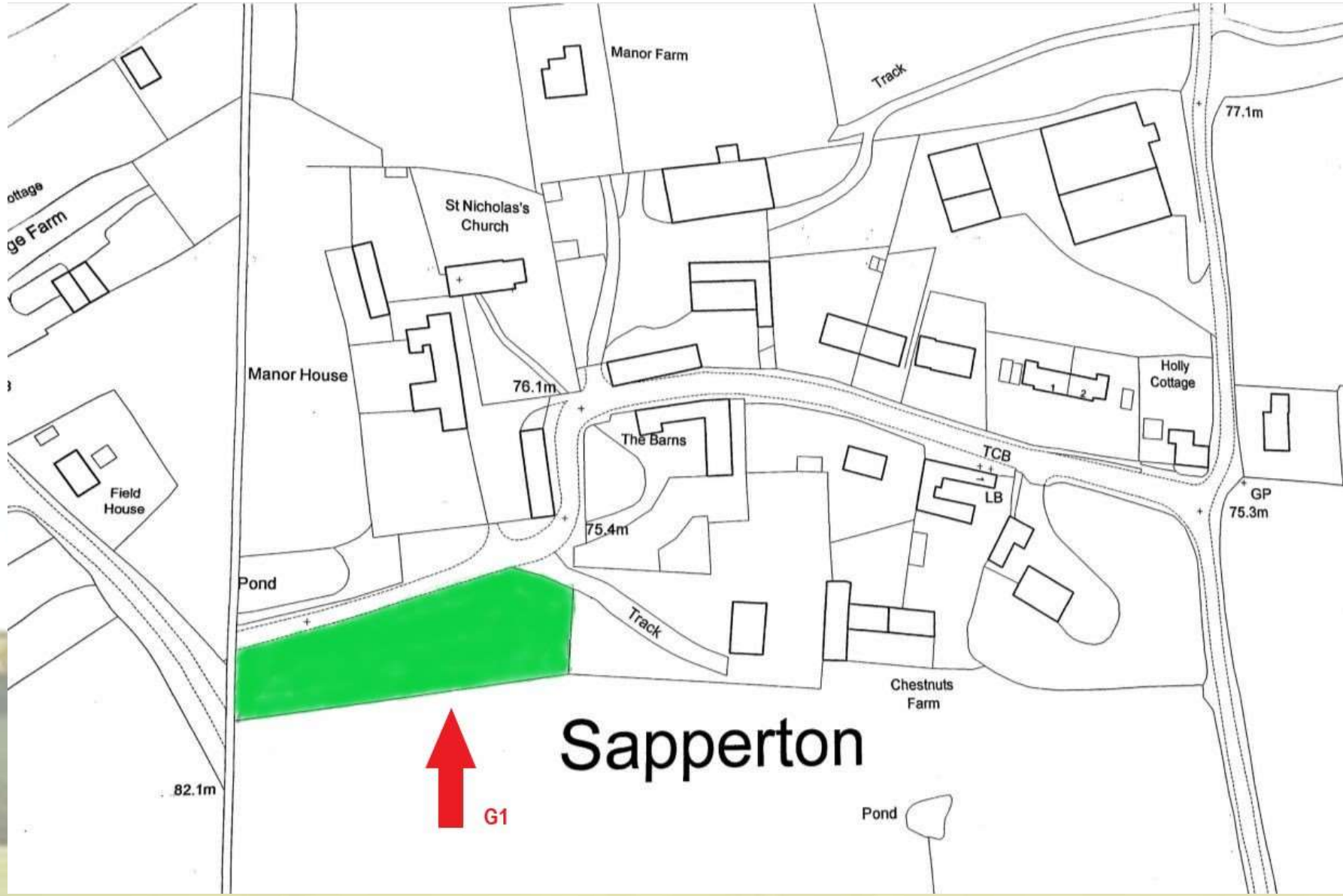












# Sapperton







# Ropsley District Neighbourhood Plan

Results from the original community  
survey

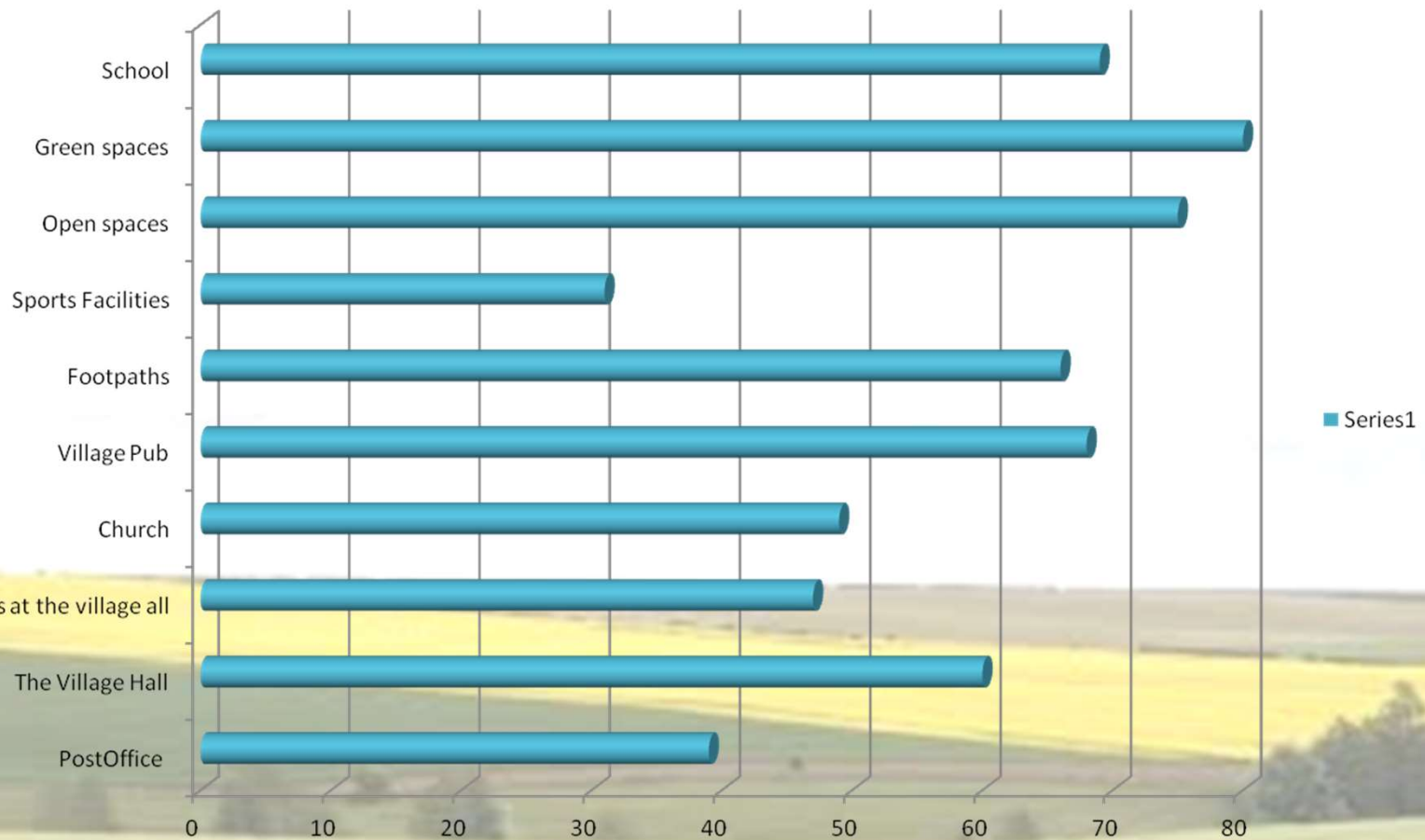


# The Original Survey

- Was open for all residents in Braceby, Humby, Ropsley and Sapperton between July and 31<sup>st</sup> August 2017
- Paper copies were distributed to every residence
- On-line survey was publicised by a variety of media
- Awareness raising posters were displayed on Parish Notice Boards

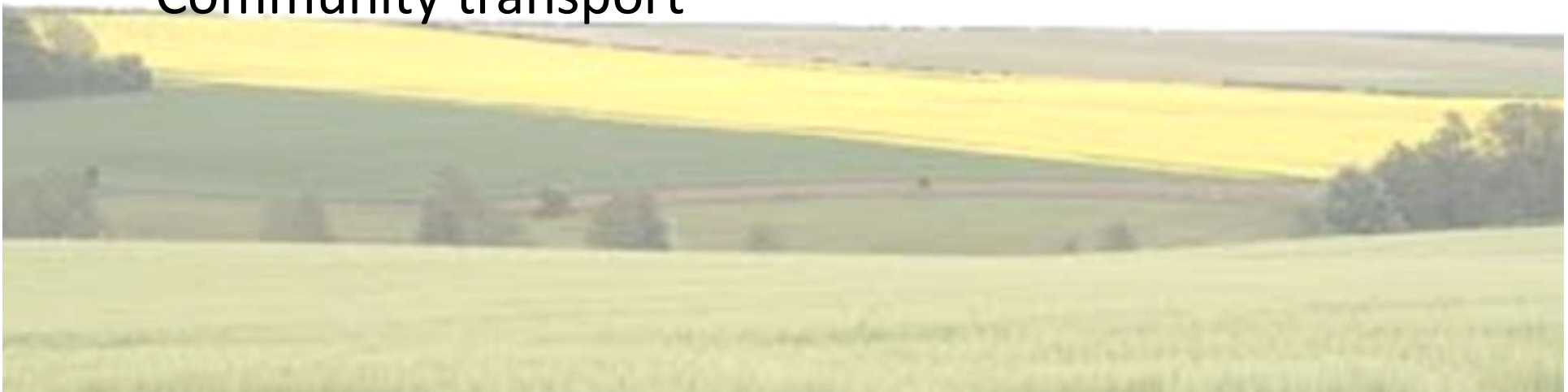


# We asked about what you valued most about the facilities in the area. You told us...



**We asked whether you thought there were other facilities that you would value having in the area. You told us...**

- A small shop
- Primary care health services in our local community e.g. doctor, baby clinic
- Better roads
- Community transport



## We asked you what you enjoyed most about living here. You told us...

- Feeling safe
- Community
- Peace and quiet
- The beauty of the countryside and the green spaces – beautiful walks
- Village life – parks, great pub, clubs and school
- Ease of access to Grantham



# We asked about housing. You told us...

**9. What SIZE of housing development do you think would be good for our area? Note: Infill means new building on the road frontage between existing properties. Backland means new homes built behind existing houses and overlooking back gardens.**

|   | Yes           | No            | Response Total |
|---|---------------|---------------|----------------|
| None  | 33.0%<br>(33) | 67.0%<br>(67) | 100            |
| "Infill development" and / or "Backland development" (up to 5 houses) | 58.0%<br>(58) | 42.0%<br>(42) | 100            |
| "Infill development" and / or "Backland development" (over 5 houses)  | 22.0%<br>(22) | 78.0%<br>(78) | 100            |
| A 'close' of about 20 houses  | 34.0%<br>(34) | 66.0%<br>(66) | 100            |
| An estate of about 50 houses  | 2.0%<br>(2)   | 98.0%<br>(98) | 100            |

On the whole most people wanted to see some development (67%).

Overwhelmingly, survey respondents wanted only limited development.

Most respondents wanted to see 2-bed starter homes and 3 bed homes .

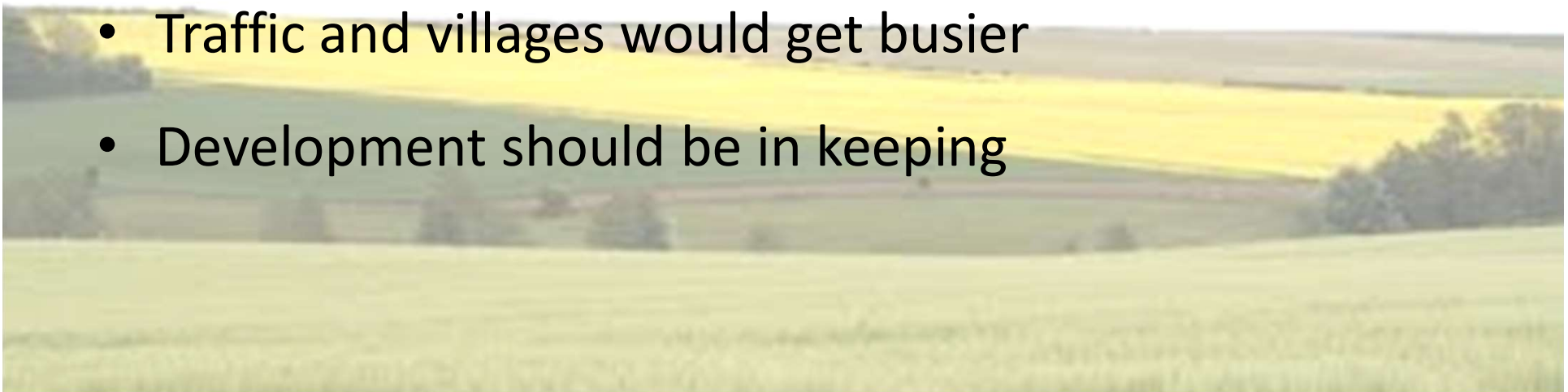
## You also told us what you were most concerned about if more development was to happen

- Concerned about the impact on the following (in priority order):
  - More traffic and parking problems
  - Changes to the villages
  - Effect on the countryside around us
  - Effect on the school
  - Effect on leisure facilities
  - Effect on the countryside



# You also told us other thoughts about our community if more development was to happen

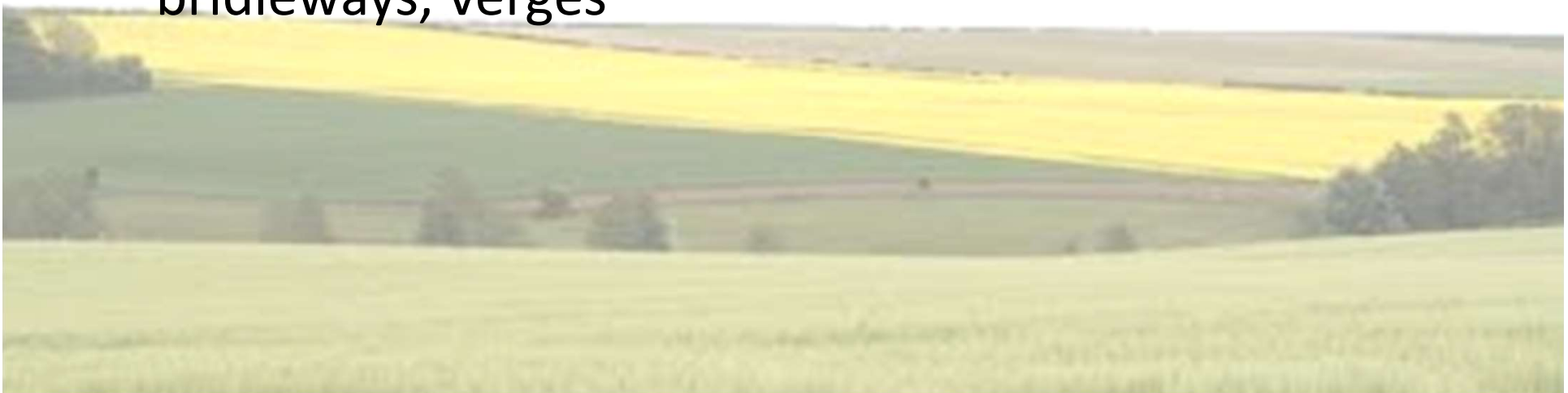
- Sustainability of any development
- Infrastructure required
- All communities need to contribute to the need for more houses
- Traffic and villages would get busier
- Development should be in keeping





## **We asked you about the conservation of our environment. The key themes you told us...**

- Retain the beauty, peace and quiet of our villages.
- Enhance the appearance of our community by ensuring development blends with traditional feel
- Enhance the village gateways, greens, pathways, bridleways, verges









**ROPSLEY**











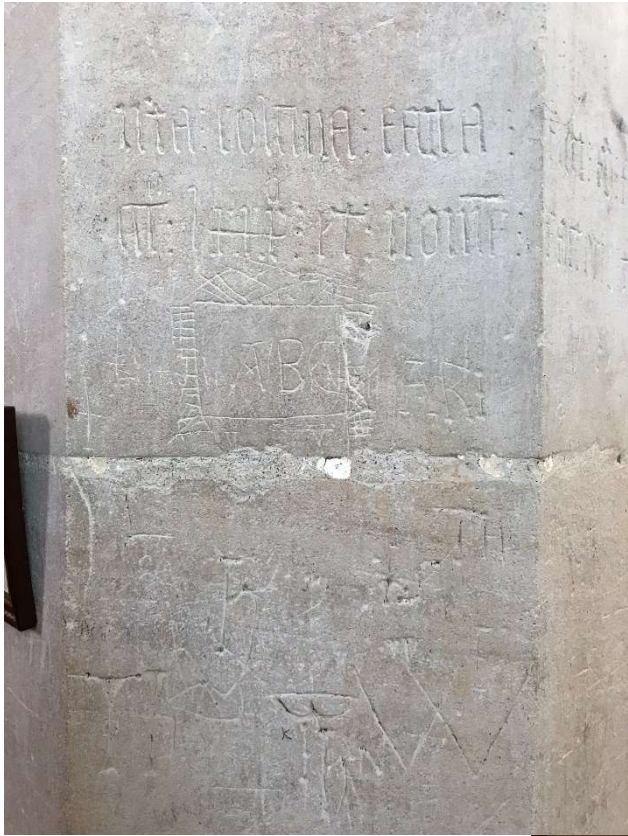


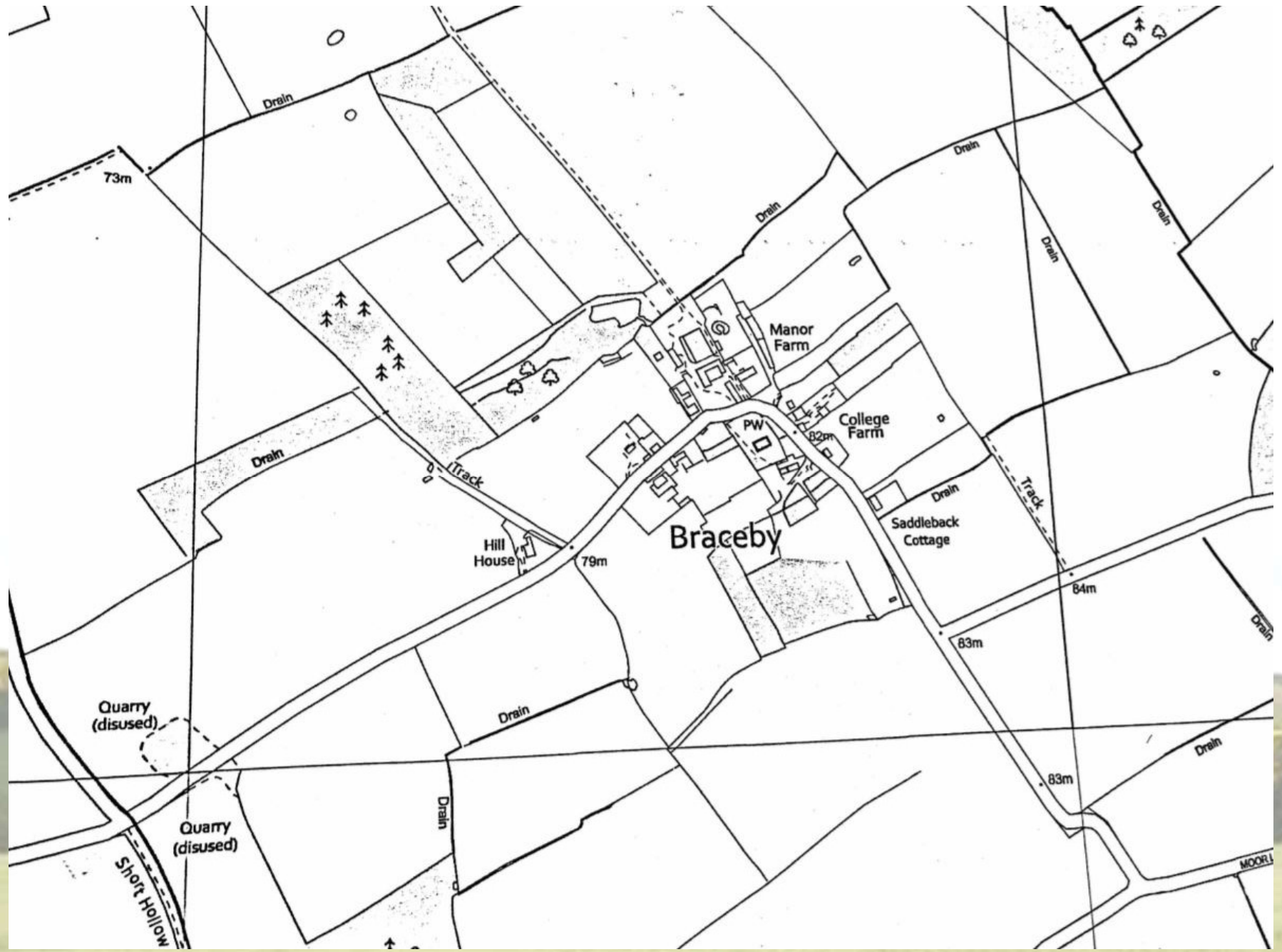














A rectangular road sign with rounded corners and a black border, mounted on two metal posts. The sign is white with the word "BRACEBY" in bold, black, sans-serif capital letters. The sign is positioned on a grassy verge next to a paved road that curves to the right. In the background, there is a large haystack on the left, a hedge on the right, and trees under a cloudy sky. The foreground shows a blurred green field.

**BRACEBY**





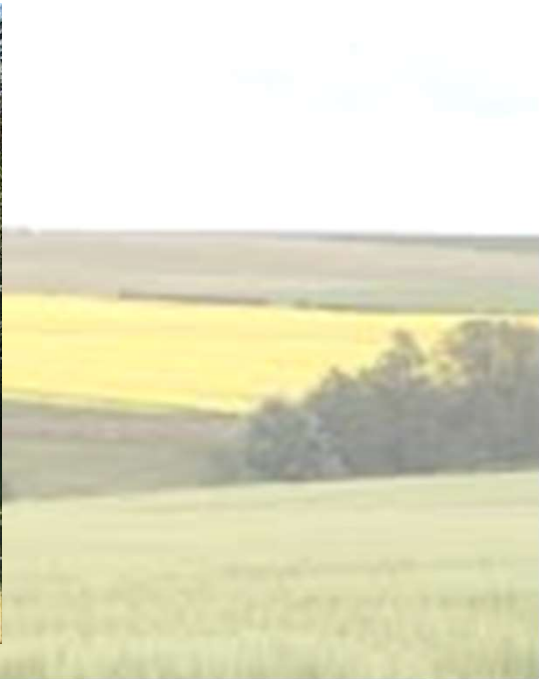
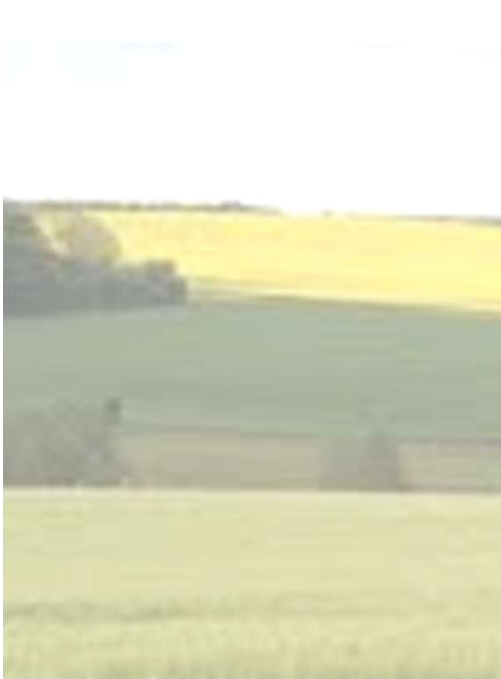






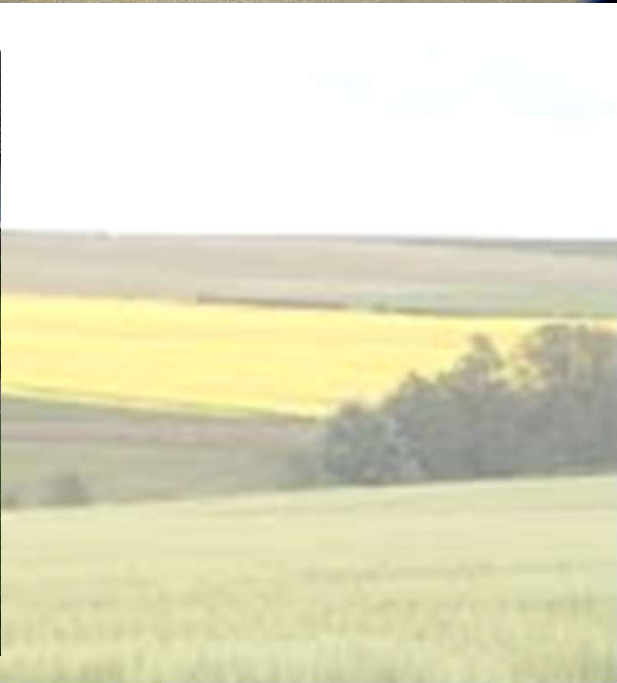








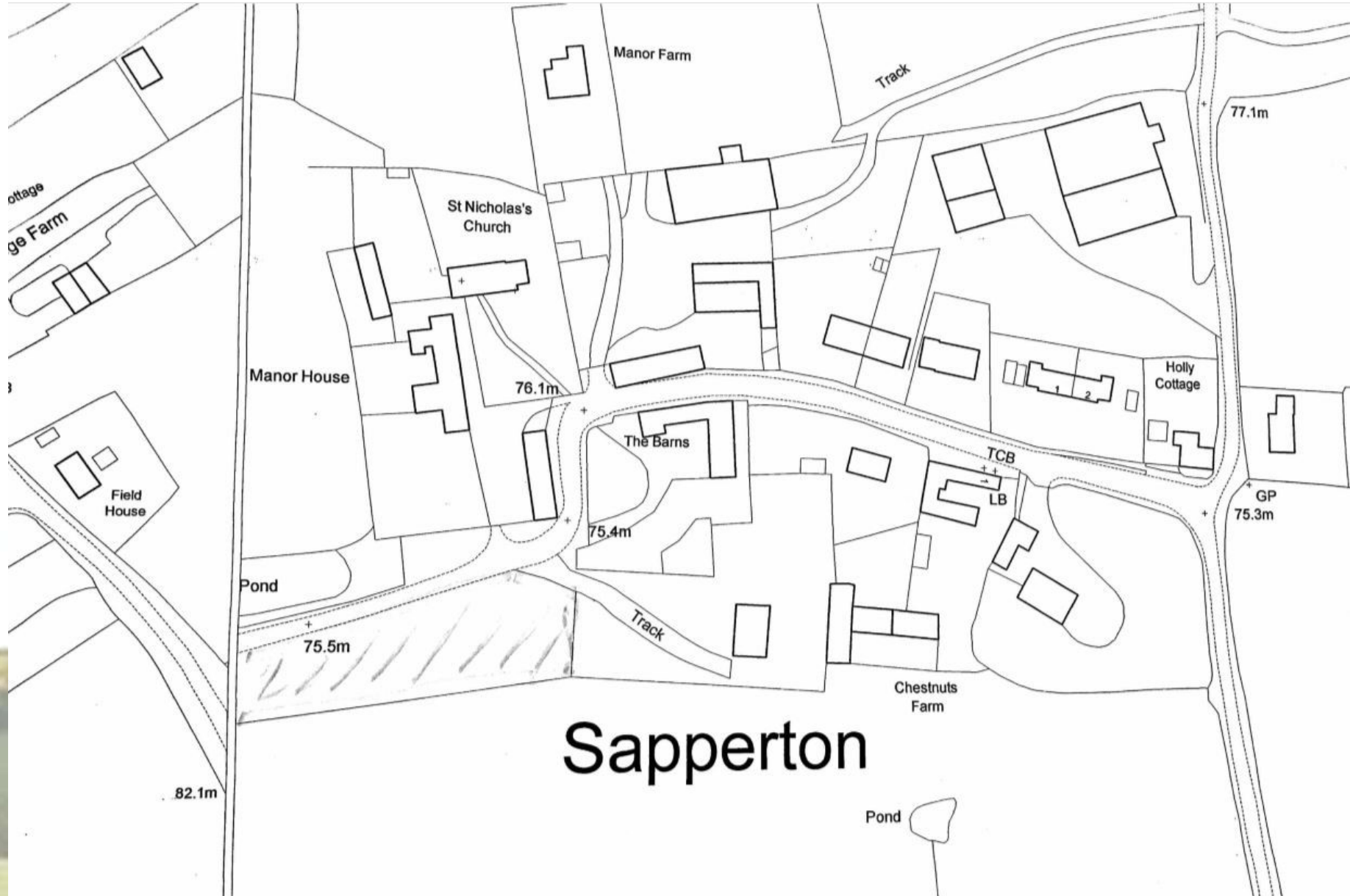












# Sapperton

**SAPPERTON**













# What happened next...

Through 2018 & 2019...

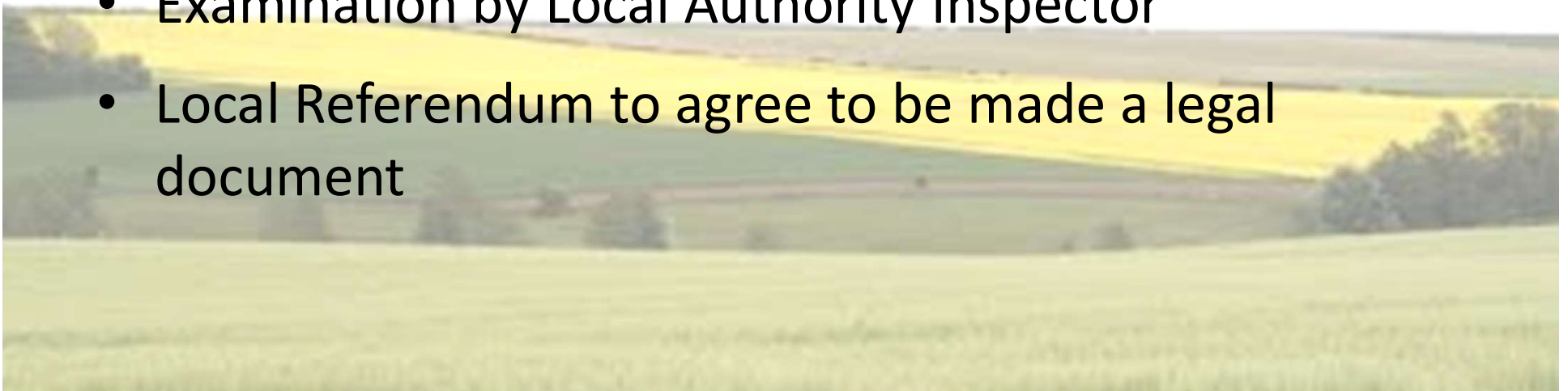
- Further work on what we have captured from the community through the questionnaire and workshop
- Take planning advice
- Produce a draft vision of the communities initial priorities



# What's happening now...

Through 2019/2020...

- Preparation of a Draft Plan
- Newsletter update
- Further community consultation through questionnaires and exhibitions
- Examination by Local Authority Inspector
- Local Referendum to agree to be made a legal document



Please complete your  
questionnaire about  
The Draft Plan  
by 29<sup>th</sup> March

**Have Your Say!**



Thank you for your  
support

Ropsley District Neighbourhood Plan

